

Product View

Front Panel



Rear Panel



Specifications

SR-HD1250		
Recording Function		
HDD storage capacity	250GB	
Video recording system	H.264 (MPEG-4 AVC), MPEG-2 TS, MPEG-2 PS, JPEG (Still)	
Audio recording system	Dolby Digital, Linear PCM	
Importable data format (to HDD)	AVCHD, HDV, DV, JPEG, BDAV, BDMV, DVD-Video/VR, Everio backup disc	
Recordable Media		
Blu-ray Disc	BD-R (SL/DL), BD-RE (SL/DL)*1	
DVD	DVD-R (SL/DL), DVD-RW	
SD Card (Still)	SDHC, SD	
Playable Media		
Blu-ray Disc	BD-Video, BD-R (SL/DL), BD-RE (SL/DL)	
DVD	DVD-Video, DVD-R (SL/DL), DVD-RW, DVD-RAM, DVD+R (SL/DL), +RW	
CD	CD, CD-R, CD-RW	
SD Card (Video*/Still)	SDHC, SD	
Recordable/Playable Disc Format		
Recordable disc format	BDAV	BD-R (SL/DL), BD-RE (SL/DL)*1
	BDMV (HDMV)	BD-R (SL/DL), BD-RE (SL/DL)*1
	DVD-Video	DVD-R (SL/DL)/-RW
	DVD-VR mode	DVD-R (SL/DL)/-RW
Playable disc format	JPEG	BD-RE (SL/DL), SDHC, SD
	BDAV	BD-R (SL/DL), BD-RE (SL/DL)*1
	BDMV (HDMV)	BD-R (SL/DL), BD-RE (SL/DL)*1
	DVD-Video	DVD-R (SL/DL)/-RW, +RW
	DVD-VR (CPRM enabled)	DVD-R (SL/DL)/-RW, DVD-RAM
	AVCHD	DVD-R (SL/DL)/-RW, DVD-RAM, SDHC, SD
	JPEG	BD-RE (SL/DL), SDHC, SD, Everio backup disc (DVD-R/-RW)
	CD-DA	Yes
	Everio backup disc	Yes

Recording Mode	
MPEG-2 TS	DR
H.264 (MPEG-4 AVC)	AF, AN, AL, AE
MPEG-2 PS	XP, SP, LP, EP, FR
Input and Output*3	
Video input/output	1 Vp-p, 75 Ω (BNC)
Audio input/output	2Vrms (pin jack)
S-video input/output	Y: 1.0 Vp-p, 75 Ω, C: 0.286 Vp-p, 75 Ω
DV input	4-pin for DV, HDV IN
Remote input	3.5 mm diameter jack
Component video output	Y: 1.0 Vp-p, 75 Ω, CB/CR, PB/PR: 0.7 Vp-p, 75 Ω
HDMI output	19-pin type A (Deep Color, x.v.Color, Ver.1.3a)
USB terminal	USB2.0
SD memory card	SDHC, SD
Accessories	
Supplied accessories	AC power cord, audio/video cable, BNC male to RCA female adapter, infrared remote control unit, "AA" battery x 2

General	
Power requirement	AC 120 V, 60 Hz
Power consumption	Power on/off 34 W/3.0 W
Temperature	Operating 41°F to 95°F (5°C to 35°C)
	Storage -4°F to 140°F (-20°C to 60°C)
Operating position	Horizontal only
Dimensions (W x H x D)	17-1/10" x 2-6/8" x 13-13/16" (435 mm x 70 mm x 351 mm)
Weight	11.0 lbs (5.0 kg)

*1: Not compatible with Ver. 1.0
 *2: Playability depends on the data format and conditions.
 *3: Corresponds to copy protection.

Recommended JVC camcorders

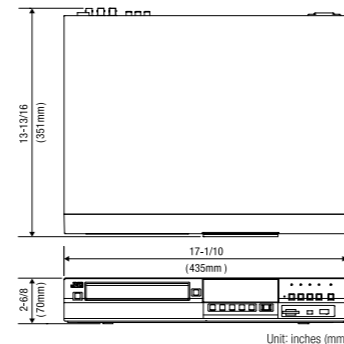


GY-HD250 **ProHD**
 3-CCD ProHD Camcorder with 16X Fujinon Lens



GZ-HM400 **HD Everio**
 HD Memory Camera

External Dimensions



JVC®

The Perfect Experience

Blu-ray Disc™ & 250GB HDD Recorder

SR-HD1250

The World First* Professional Blu-ray & HDD Combo Deck Recorder with SD Card Slot!
 Share and Archive your Original HD Content.



E. & O.E. Design and specifications are subject to change without notice.
 "Blu-ray Disc" and "Blu-ray Disc" logo are trademarks. "AVCHD" and the "AVCHD" logo are trademarks of Panasonic Corporation and Sony Corporation. HDMI, the HDMI logo and High-Definition Multimedia Interface are trademarks or registered trademarks of HDMI Licensing LLC. "Dolby" and the double-D symbol are trademarks of Dolby Laboratories. i.LINK is a trademark of Sony Corporation. DTS is a registered trademark and the DTS logos, Symbol, DTS-HD and DTS-HD Master Audio Essential are trademarks of Digital Theater Systems, Inc. The SD and SDHC logos are trademarks of the SD Card Association. Java and all Java based trademarks and logos are trademarks or registered trademarks of Sun Microsystems, Inc. in the U.S. and other countries. All other brand or product names may be trademark and/or registered trademarks of their respective holders. Any rights not expressly granted herein are reserved.
 Copyright © 2009 Victor Company of Japan, Limited (JVC). All Rights Reserved.

JVC®

DISTRIBUTED BY

www.jvc.com

Printed in Japan
 BID-PRO-0003

"JVC" is the trademark or registered trademark of Victor Company of Japan, Limited.

*As of September 1, 2009 (source: JVC)





Blu-ray Disc & 250GB HDD Recorder SR-HD1250

HDD and Blu-ray Recorder Combo Deck with SD Card Slot Compatible with AVCHD, HDV and DV Camcorders.

JVC is proud to introduce the SR-HD1250, the world's first* professional HD combo deck featuring a Blu-ray recorder, 250GB HDD, and SDHC compatible SD card slot. The SR-HD1250 is ready to import recordings from high-definition camcorders compatible with AVCHD, HDV and DV to facilitate the creation of recordings in full HD format. Once footage is imported onto the deck's 250GB HDD from a variety of media and interfaces, HD content can be edited, archived and/or dubbed onto Blu-ray discs or down converted onto DVDs. The entire BD or DVD disc can be recorded using the Entire Disc Dubbing. High-speed Dubbing enables for quick duplication of original HD content. The SR-HD1250 is ideal for videographers who need to compile footage used in sports coaching or even religious services. This unique combo deck is also highly suitable for other applications such as business meetings, education, small-scale production, weddings, etc., as it provides high quality, speed, and convenience in one handy package.

*As of September 1, 2009 (source: JVC)

The quick and easy way to import, record, and playback

Delivers professionally finished recordings

Users can easily and quickly make recordings of camcorder content as is or perform simple editing on the SR-HD1250 without the use of a PC. Once this is completed, all that is left to do is burn the content onto BD/DVD discs for delivery to clients.

Supported disc recording/playback formats

Recordings of video and still images can be made on BD-RE, BD-R, DVD-R, and DVD-RW discs, whereas JPEG still images can be recorded on SDHD and SD cards from the HDD. For DVD discs, VR and Video recording modes are available. Unused discs and SD cards can be formatted on the deck. The SR-HD1250 plays titles stored on the HDD, videos on all of the aforementioned discs as well as commercially available BD-Video and DVD-Video titles*, plus music CDs.

*Offering 1080/24p output

Create menu-supported Blu-ray discs

Blu-ray discs can be created using the BDMV (with menu) format; BDAV discs can also be created and dubbed if necessary.

Compatible with dual-layer 50GB Blu-ray discs, and records up to 24 hours of full high-definition images on a single disc

The deck is also compatible with high-capacity dual-layer 50GB Blu-ray discs, allowing up to 24 hours (AE mode) of full high-definition images to be recorded on a single disc. Writing onto inexpensive LTH discs is also supported.

Compatible with camcorders supporting AVCHD, HDV, and DV formats

Multiple file formats such as AVCHD, HDV, DV, and that of JVC's HD Everio camcorder are supported; digital dubbing can also be performed.

Digital interface that enhances camcorder compatibility

Interfaces such as USB, SDHC slot and i.LINK are featured to facilitate convenient connection to camcorders and HD cameras.



Viewing on a display monitor

Viewing of HD video on edited BD/DVD discs, SDHC/SD cards*, or on the HDD directly on a display monitor is made possible by connection via an HDMI cable. With an HDMI connection, the content containing 7.1ch surround sound can be reproduced in its original format.



*Playability depends on the data format and conditions.

Simple yet convenient editing and dubbing of HD content

Edit functions

Simplified editing is possible without the use of a PC. Editing functions include creating a playlist, editing a thumbnail or chapter, delete scenes, divide and more. Of course the names of disc, title or group name as well as changing the shooting date and time can be performed at ease.



Flexible and bi-directional recording functions

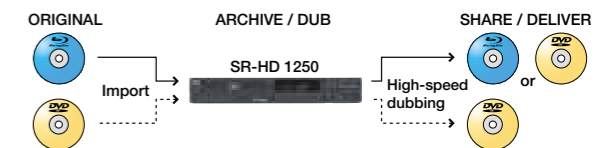
Even without a PC, it is possible to copy video recordings onto a Blu-ray disc from an HD camcorder via the HDD or down convert video recordings and record them onto a DVD via the HDD. Dubbing (at high-speed or in a specific rec mode) between the internal HDD and Blu-ray disc/DVD or vice versa, is also possible.



Share HD content #1: Edit and record footage from HD/SD camera to a disc via the HDD and share

Entire Disc Dubbing function

An entire Blu-ray or DVD disc can be dubbed* onto another blank disc.



Dub the entire disc as is*, regardless of whether the content is HD or SD. Share HD content #2: Dub HD/SD content onto another disc in high-speed via the HDD and share

*Some restrictions may apply.

High-speed Dubbing function for prompt delivery to clients

The time it takes to dub from the internal HDD onto a Blu-ray or DVD disc can be shortened significantly via the High-speed Dubbing function that enables recording at a maximum speed of x32*. Make use of BD or DVD disc that supports high-speed recording.

*Using a BD-R 4x disc recorded in AE mode.

Convenient and user-friendly features

Create Repeat Playback discs

Disc authoring for professional applications, such as creating discs that repeat playback automatically or demonstration discs, can be performed.

Last Function Memory and Resume functions

Mode Lock and Disc Tray Lock functions

Status display

Shows current settings and operating status of the unit.

